



3974 Jurupa Ave., Riverside, CA 92506
800-321-9943 · Fax 866-861-7959

Special Bite Splints Rx Offer*

1. Carefully package your case, including this Rx, and tape box securely closed.
2. To schedule shipping pickup, call us at 800-321-9943.
3. Please allow five working days in lab.
4. You'll save \$20 on one bite splint with this Rx.

OFFER EXPIRES APRIL 30, 2019

*Price does not include round-trip shipping or applicable taxes. Limit one specially priced Rx per case. Web offer can only be used a maximum of four times per account. Special pricing not valid with any other offer.

Dr. Name _____ Acct. # _____

Patient Name _____ Male Female Age _____

First Last

Deliver by 5 p.m. on _____

Upper and lower impressions or models with bite registration required

(CHOOSE ONE)

- COLORED COMFORT H/S BITE SPLINT**
(hard/soft) **\$64** you pay **\$44***
 Upper Lower
Color options: Blue Green Pink

- CLEAR COMFORT H/S BITE SPLINT**
(hard/soft) **\$59** you pay **\$39***
 Upper Lower
Color options: Clear

- COLORED COMFORT BITE SPLINT**
(hard) **\$64** you pay **\$44***
 Upper Lower
Color options: Turquoise

- CLEAR COMFORT BITE SPLINT**
(hard) **\$59** you pay **\$39***
 Upper Lower
Color options: Clear



\$20 off Bite Splint

* V J X N 7 9 *



Signature _____ License # _____
(see reverse for limited warranty details)

ENCLOSED WITH CASE

Impressions Models Bite

Other: _____

TERMS AND WARRANTY INFORMATION

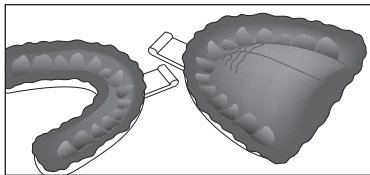
Please allow full working time for each product selected.
Working times are NOT guaranteed and do NOT include weekends or holidays.

We honor VISA, MASTERCARD, AMEX and DISCOVER.

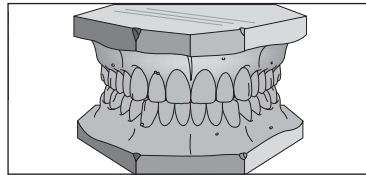
TERMS: Cost of collection of any account will be paid by the customer. All accounts are payable within 30 days of statement date. **Accounts not paid within the stated terms will be subject to COD status and a late charge of 2 percent of the unpaid balance.** Prices subject to change without notice. Rx must be enclosed with original case submission.

LIMITED WARRANTY/LIMITATION OF LIABILITY. Riverside Dental Ceramics ("the lab") warrants that all dental devices (a "device") are made according to your specification and approval in the belief that the device will be useful and **MAKES NO OTHER WARRANTIES INCLUDING, BUT NOT LIMITED TO, ANY IMPLIED WARRANTY OF MERCHANTABILITY OR FITNESS FOR A PARTICULAR PURPOSE.** Subject to the return of a device that is placed and then fails, the lab will repair or replace the device without charge for the cost of materials and workmanship or refund the original price paid, at the lab's option, as follows: (1) screw-retained implant abutments up to 20 years (including replacement of a device that was made by the lab that was attached to said abutments and including an Inclusive® Tapered titanium dental implant upon request at no extra charge); (2) porcelain to metal, all ceramic, all metal, single-unit inlay, onlay and crown composite resin final prosthetics, and screw-retained crowns and implant bars, up to seven years; (3) composite resin bridges (excluding Maryland and inlay/onlay bridges) up to five years; (4) Transition Crowns and Bridges® up to two years; (5) thermoformed appliances and splints if the failure is due to defects in materials or workmanship, provisionals, composite resin Maryland and inlay/onlay bridges, up to six months; (6) all other dental devices up to 30 days if the failure is due to defects in materials or workmanship. This Warranty is exclusively for your benefit, is not transferable and does not extend to any patients. You agree to pay all other costs of adjustment, repair and replacement of a device. Except where prohibited by law, the lab **WILL NOT BE LIABLE FOR ANY LOSS OR DAMAGES ARISING FROM THE USE OF A DEVICE, WHETHER DIRECT, INDIRECT, SPECIAL, INCIDENTAL OR CONSEQUENTIAL,** regardless of the theory asserted, including warranty, contract, negligence or strict liability and if such disclaimer is not permitted by law, the duration of any implied warranty is limited to 90 days from the date of delivery. In the event of a dispute and absent an amicable resolution the parties mutually agree to waive class actions in favor of mandatory individual arbitration of claims under this limited warranty in and in accordance with the laws of California. The lab does not guarantee the performance of independent carriers.

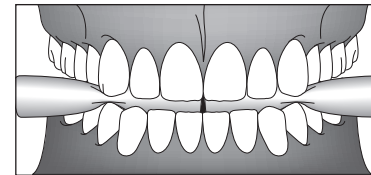
IMPRESSION AND BITE REGISTRATION GUIDELINES



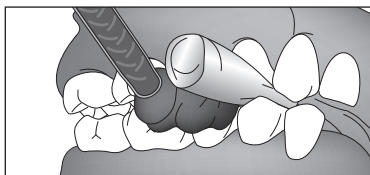
Take full-arch upper and lower impressions using alginate or vinyl polysiloxane (VPS) impression materials.



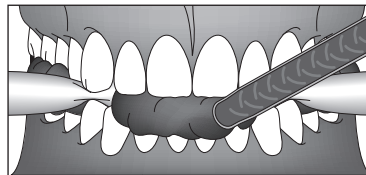
Pour wet alginate impressions with dental stone following the manufacturer's proper water-to-powder ratio before sending to lab with Rx.



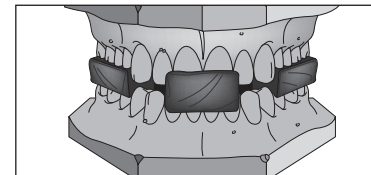
A quick bite technique is to place two cotton rolls behind the cusps and guide the patient into centric relation.



With the patient in open centric relation, inject bite registration into the posterior opening of both quadrants.



Next, inject bite registration into the anterior opening to capture a complete open construction bite at centric relation.



Upper and lower stone models mounted with open construction bite. Note the openings between the anterior teeth.